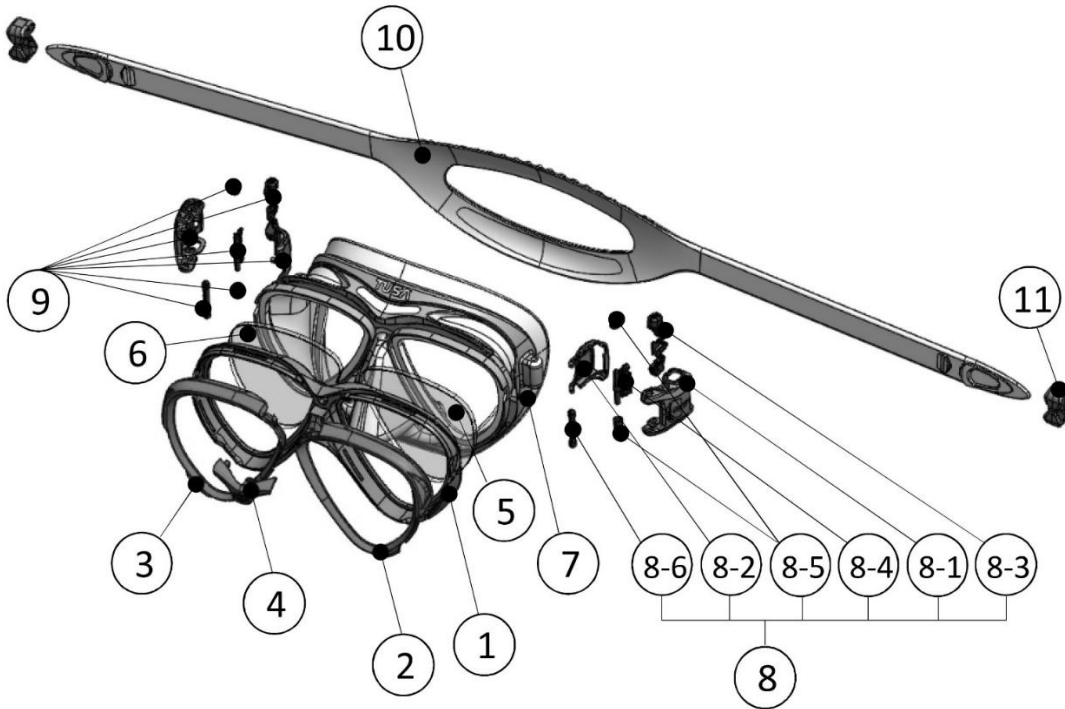


### M2004 / Intega



| Model | Item No. | Description        | Part No.   |
|-------|----------|--------------------|------------|
| M2004 | 1        | BASE FRAME         | M2004-010  |
| M2004 | 2        | FRONT FRAME/L      | M2004-020  |
| M2004 | 3        | FRONT FRAME/R      | M2004-030  |
| M2004 | 4        | CENTER PART        | M2004-040  |
| M2004 | 5        | LENS(LEFT)         | M211-130   |
| M2004 | 6        | LENS(RIGHT)        | M211-140   |
| M2004 | 7        | SKIRT              | M2004-050  |
| M2004 | 8        | ADJUSTER ASSY / L  | MU341L     |
| M2004 | 8-1      | ADJUSTER OUTER / L | MU341-010L |
| M2004 | 8-2      | ADJUSTER INNER     | MU341-020  |
| M2004 | 8-3      | ADJUSTER BUTTON    | MU341-030  |
| M2004 | 8-4      | ADJUSTER HOOK      | MU341-040  |
| M2004 | 8-5      | ADJUSTER PIPE      | MU341-050  |
| M2004 | 8-6      | ADJUSTER PIN       | MU341-060  |
| M2004 | 9        | ADJUSTER ASSY / R  | MU341R     |
| M2004 | 9-1      | ADJUSTER OUTER / R | MU341-010R |
| M2004 | 9-2      | ADJUSTER INNER     | MU341-020  |
| M2004 | 9-3      | ADJUSTER BUTTON    | MU341-030  |
| M2004 | 9-4      | ADJUSTER HOOK      | MU341-040  |
| M2004 | 9-5      | ADJUSTER PIPE      | MU341-050  |
| M2004 | 9-6      | ADJUSTER PIN       | MU341-060  |
| M2004 | 10       | STRAP              | M2004-060  |
| M2004 | 11       | STRAP TIE          | M2004-070  |