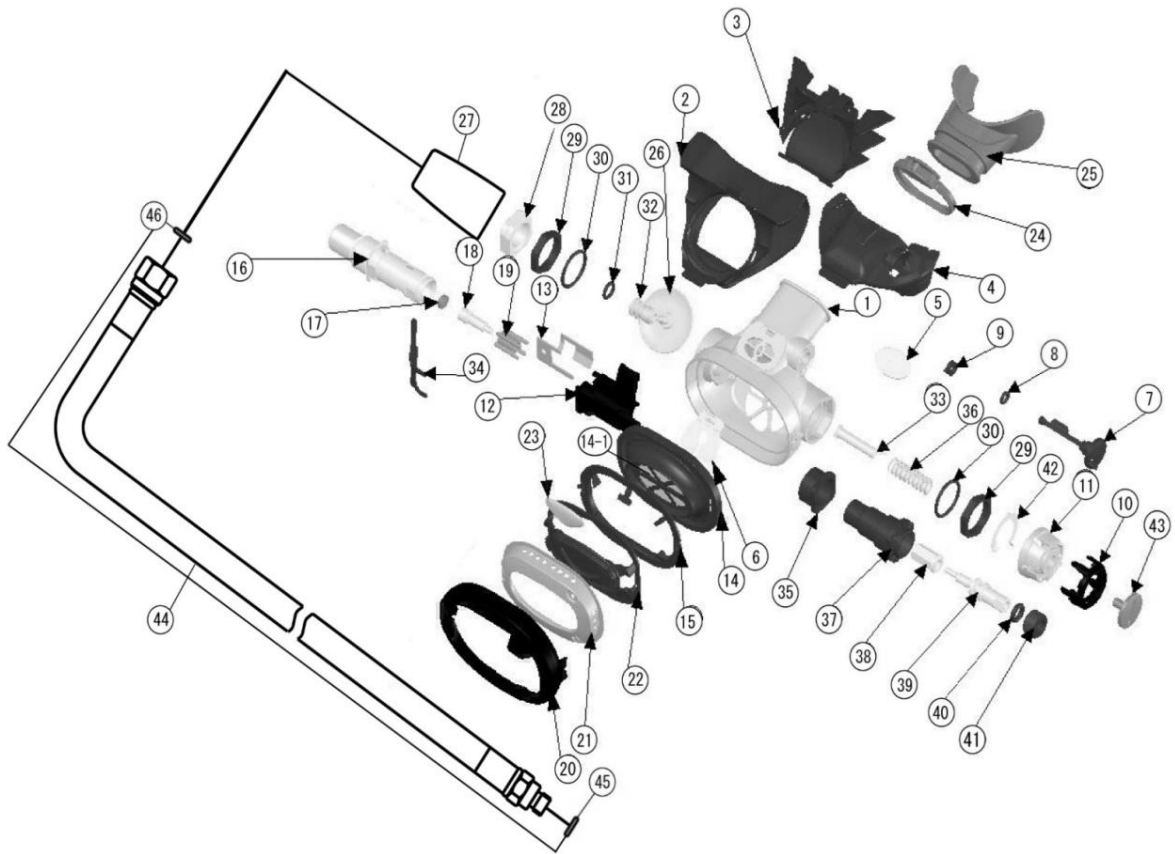


S-80



S-80

Model	Item No.	Description	Part No.
S-80	1	CASE	S-80-010
S-80	2	EX TEE	RSU-253
S-80	3	EX TEE FRAME	RSU-253
S-80	4	UPPER EX TEE	S-80-042
S-80	5	UPPER EX VALVE	S-80-050
S-80	6	CHECK VALVE	S-80-060
S-80	7	FLAP	S-80-070
S-80	8	O-RING	007
S-80	9	FLAP RETAINER	S-80-080
S-80	10	KNOB RIDGE	S-80-100
S-80	11	KNOB	S-80-090
S-80	12	DEFLECTOR	S-80-110
S-80	13	HEAT EX PLATE	S-80-120
S-80	14	DIAPHRAGM	S-80-130
S-80	15	DIAPHRAGM RETAINER	S-80-150
S-80	16	HOUSING	S-80-160
S-80	17	DEMAND SEAT	S-30-240
S-80	18	DEMAND STEM	S-30-231
S-80	19	DEMAND STEM GUIDE	S-30-210
S-80	20	FACE RING	S-80-190
S-80	21	METAL COVER	S-80-210
S-80	22	DIAPHRAGM COVER	S-80-200-BK
S-80	23	DECAL	S-80-220
S-80	24	MOUTHPIECE CLIP	RSU-238
S-80	25	MOUTHPIECE	RSU-196
S-80	26	EXHAUST VALVE	S-30-271
S-80	27	RUBBER SLEEVE	S-40-080
S-80	28	NUT RING	S-40-020
S-80	29	NUT, DEMAND HOUSING	S-30-260
S-80	30	SPACER	S-30-250
S-80	31	O-RING	017
S-80	32	O-RING	010
S-80	33	ORIFICE	S-30-040
S-80	34	DEMAND SPRING GUIDE	S-30-280
S-80	35	DEMAND LEVER	S-30-073
S-80	36	GRAND RETAINER	S-30-110
S-80	37	DEMAND SPRING	S-40-060
S-80	38	GRAND NUT	S-30-171-A
S-80	39	PISTON SPRING FOLLOWER	S-30-120
S-80	40	ADJ. SCREW	S-30-130

S-80

S-80	41	O-RING	107
S-80	42	RETAINING SCREW	S-30-150
S-80	43	CLICK RING	S-30-180
S-80	44	SCREW, KNOB	S-30-160
S-80	45	L.P. HOSE ASSY	LPU-118 (L=760)
S-80	14-1	DIAPHRAGM DISK	S-80-140