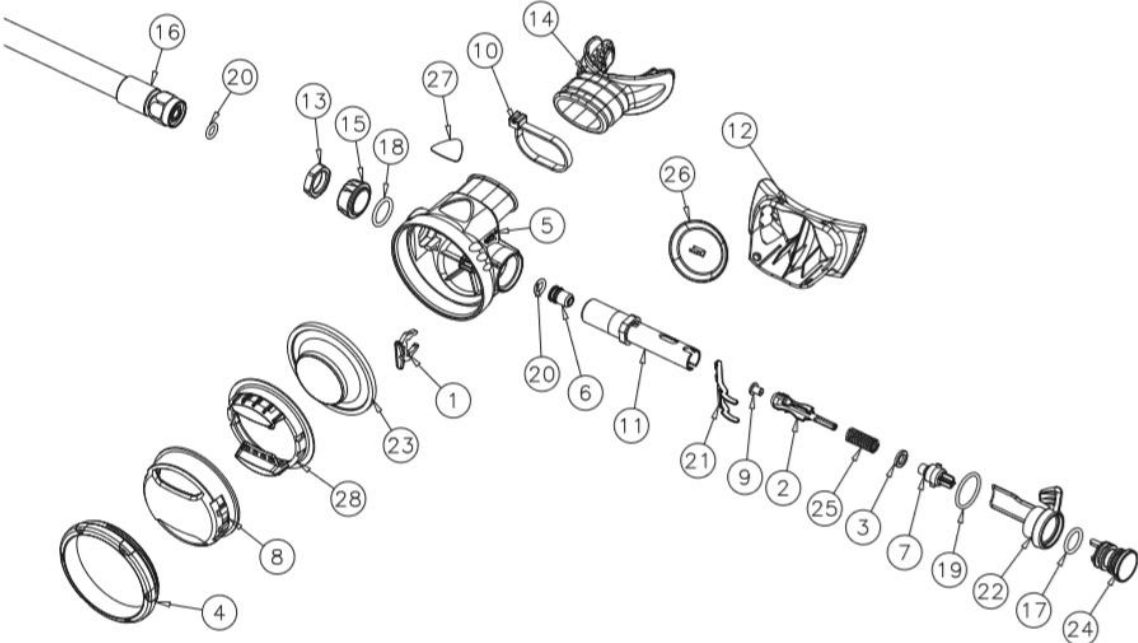


S-SS0007



S-SS0007

| Model | Item No. | Description | Part No. |
|-------|----------|-------------------------------|-----------|
| S0007 | 1 | PLUG CLIP | BE-8374 |
| S0007 | 2 | VALVE STEM | BE-8368 |
| S0007 | 3 | RING COVER | BE-7106 |
| S0007 | 4 | CROWN, GREY | BE-8421 |
| S0007 | 5 | HOUSING PLUG | BE-8376 |
| S0007 | 6 | ORIFICE | BE-8068 |
| S0007 | 7 | SPRING STOPPER | BE-8101 |
| S0007 | 8 | SOFT COVER, BLACK | BE-8373 |
| S0007 | 9 | LP SEAT | BE-8390 |
| S0007 | 10 | CLIP 4.6x203 | BE-225036 |
| S0007 | 11 | EXPANSION CHAMBER | BE-8364 |
| S0007 | 12 | EXHAUST TEE | BE-8232 |
| S0007 | 13 | NUT | BE-8156 |
| S0007 | 14 | MOUHPIECE | BE-6204 |
| S0007 | 15 | SPACER | BE-8242 |
| S0007 | 16 | LP HOSE | BE-16778 |
| S0007 | 17 | O'RING | BE-9099 |
| S0007 | 18 | O'RING | BE-9100 |
| S0007 | 19 | O'RING | BE-6205 |
| S0007 | 20 | O'RING | BE-6225 |
| S0007 | 21 | LEVER | BE-8158 |
| S0007 | 22 | VENTURI LEVER | BE-8181 |
| S0007 | 23 | DIAPHRAGM | BE-8233 |
| S0007 | 24 | HOUSING PLUG | BE-8410 |
| S0007 | 25 | LP SPRING | BE-8022 |
| S0007 | 26 | EXHAUST VALVE | BE-8236 |
| S0007 | 27 | 2ND STAGE STICKER | BE-8001 |
| S0007 | 28 | S7 SOFT COVER, DEFLECTOR GREY | BE-8422 |